

HOW TO CHANGE CUTTER AND CUT PATTERN

01

Pull “lift” handle on front side of kitchen shredder upward. (see Fig.1)

02

Pull out cutter knob on side of kitchen shredder and slightly rotate to reach required cutter and position. (see Fig.2)

03

Adjust cutter and pull “lift” handle back to original.

04

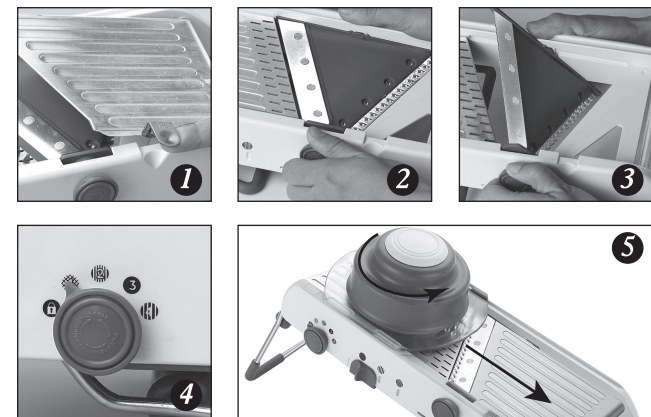
Adjust thickness adjustment knob to Gear 1.(see Fig.4)

05

Secure food ingredient with fixed pins and put it on safety pusher.

06

The first step is to cut forward, and the second step is to reset and rotate location pin for 90 degrees, repeat the above two steps to achieve the function of cutting into flowers



ATTENTION

Because these cutters are extremely shape, please be careful in use.

- ◆ When using or clearing kitchen shredder, directly touching cutter with finger is strictly prohibited. (Suggest using cleaning brush to remove residue left on cutter.)
- ◆ Children are prohibited from using the product. Please keep well and place out of the reach of children.
- ◆ Combined use of fixed pin and safety pusher is required in use. In case of food ingredient which cannot be treated by the product, please consider other treatment.



HOW TO CLEAN AND STORE

01

Press one hand upon gray section of fixed pin, rotate top white section with the other hand, and then remove and clean fixed pin.

02

After inverting removed gray section, align gray pins with holes on white uneven section and insert into these holes. Then turn it back, insert pins on the remaining white section into these holes and slightly rotate for completing assembly of fixed pins.

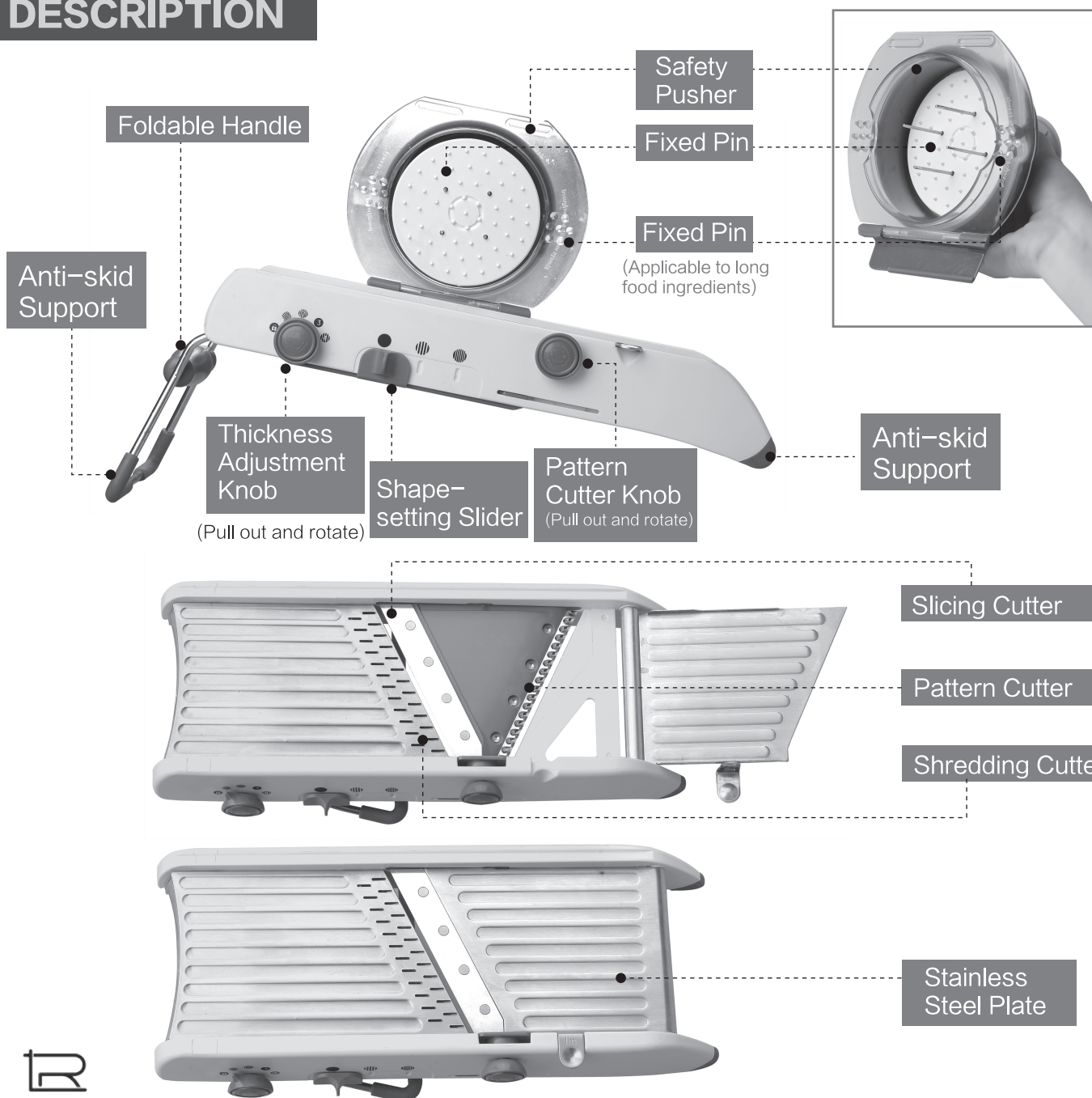
USER MANUAL

Multifunctional kitchen Shredder



Before using it, please carefully read this instruction manual.

PRODUCT STRUCTURE DESCRIPTION



HOW TO USE

01

Pull out anti-skid support beneath kitchen shredder. (see Fig.1)

02

Clip gray section on side of safety pusher into slot position of kitchen shredder. (see Fig.2)
(Before securing safety pusher, please confirm that no foreign body is found in slot.)

03

Draw out thickness adjustment knob on side of kitchen shredder, and rotate rightward for adjusting desired thickness (totally 4 gears). (see Fig.3)

04

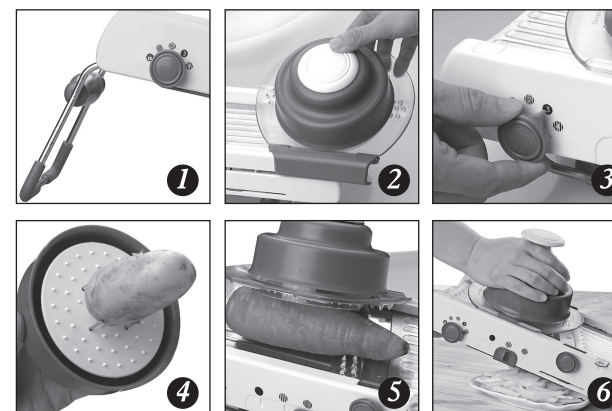
Use fixed pins to secure food ingredient. (see Fig.4)
(In the process, combined use of fixed pin and safety pusher is proposed to avoid hand injury)

05

When securing long food ingredients like carrot or cucumber, suggest you consider shape plastic nails on back of safety pusher. (see Fig.5)

06

Just tap fixed pins and safety pusher to easily complete the cutting process. (see Fig.6)



HOW TO SHRED

01

Utilize shape-setting slider on side of kitchen shredder to select required shape.



02

French Fries

Simultaneously adjust to Gear 4 on thickness adjustment knob, and No. 2 on shape-setting slider



03

Shredded Carrot/Cucumber/ Potato with Sauce

Simultaneously adjust to Gear 2 on thickness adjustment knob, and No. 3 on shape-setting slider



04

Combined use of fixed pin and safety pusher is proposed to avoid hand injury.

